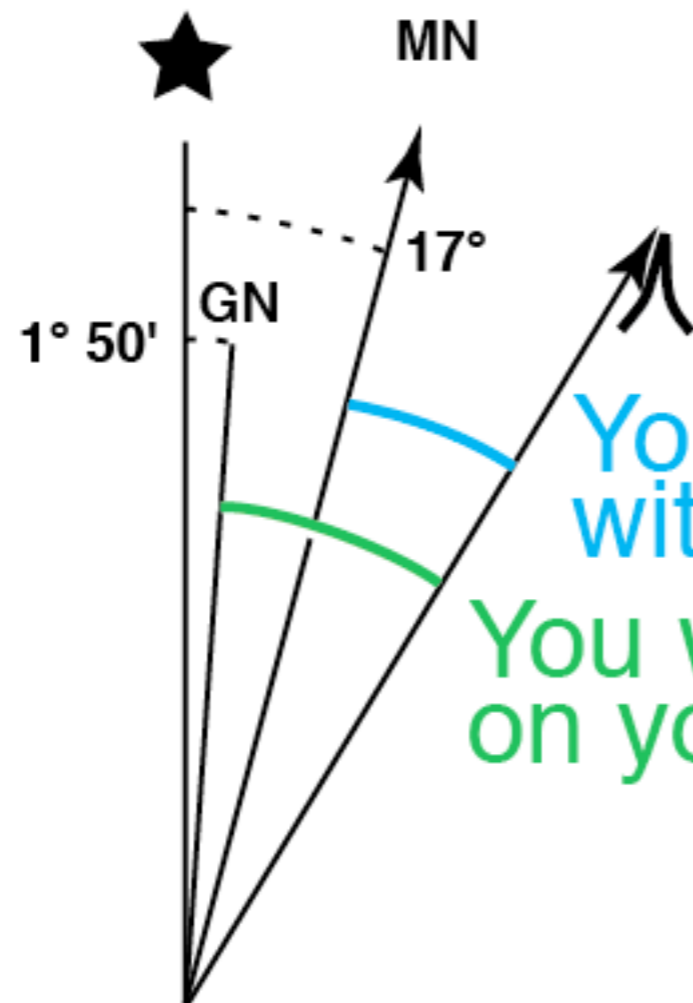


Locating a Column of Smoke with intersecting bearings



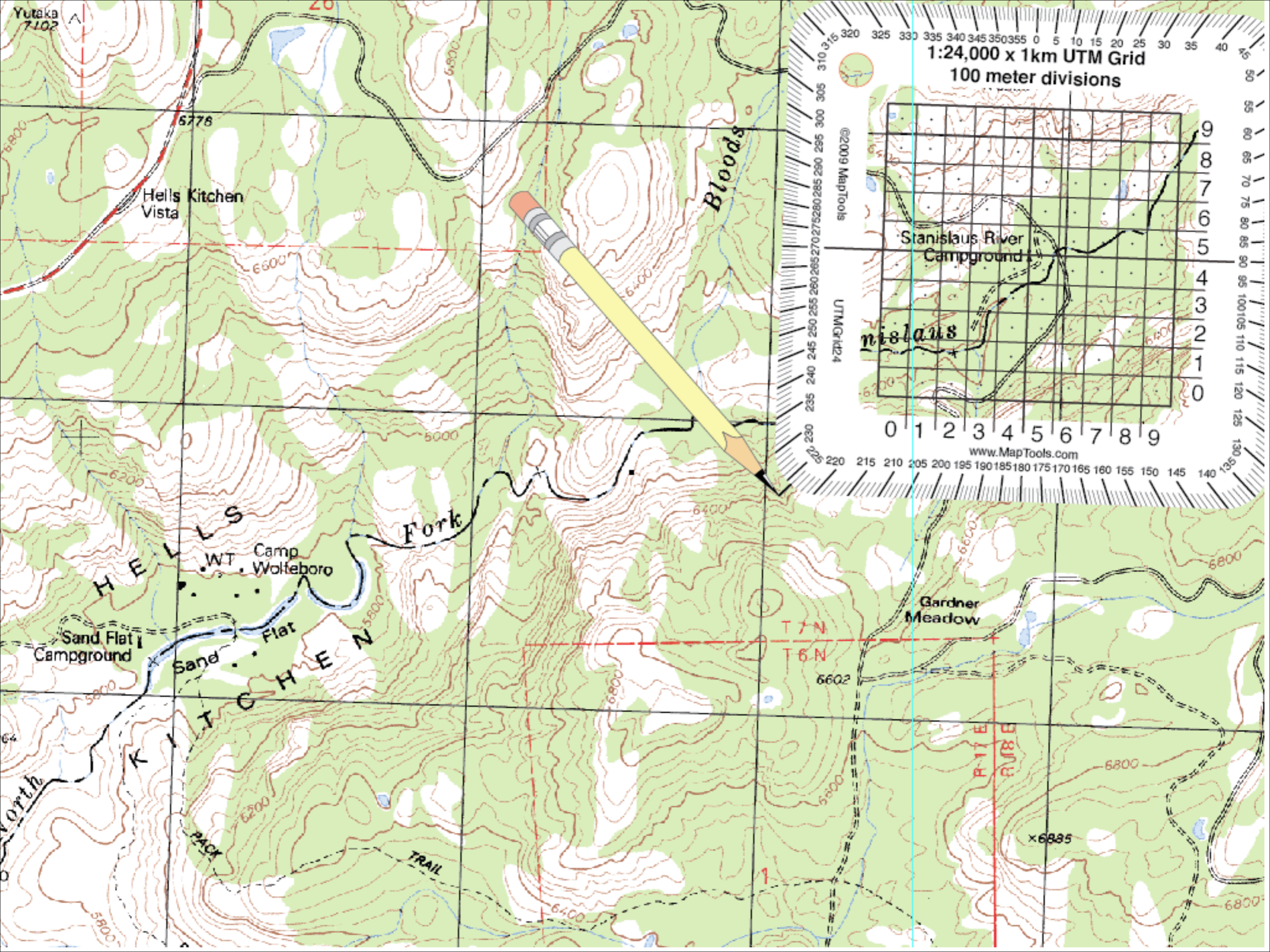
*Locate the
Smoke*

- From the Stanislaus River Campground, the smoke is visible at 210° M.
- From 755.88km E 4256.80km N, 142° M.
- From the Hells Kitchen Vista, 115° M.
- What are the UTM coordinates for the fire?
- How would you reach the fire traveling from the Hells Kitchen Vista? How long would it take you to get there?



You measured this angle with your compass.

You want to plot this angle on your map.



Yutaka
7102

6778

Hells Kitchen
Vista

6600

Bloods

1:24,000 x 1km UTM Grid
100 meter divisions

©2009 MapTools

UTM Grid 24

Stanislaus River
Campground

Stanislaus

0 1 2 3 4 5 6 7 8 9

www.MapTools.com

HELLS
KITCHEN

WT Camp
Wolfboro

Fork

6400

Sand Flat
Campground

Sand Flat

Gardner
Meadow

6602

6800

6800

x6885

6800

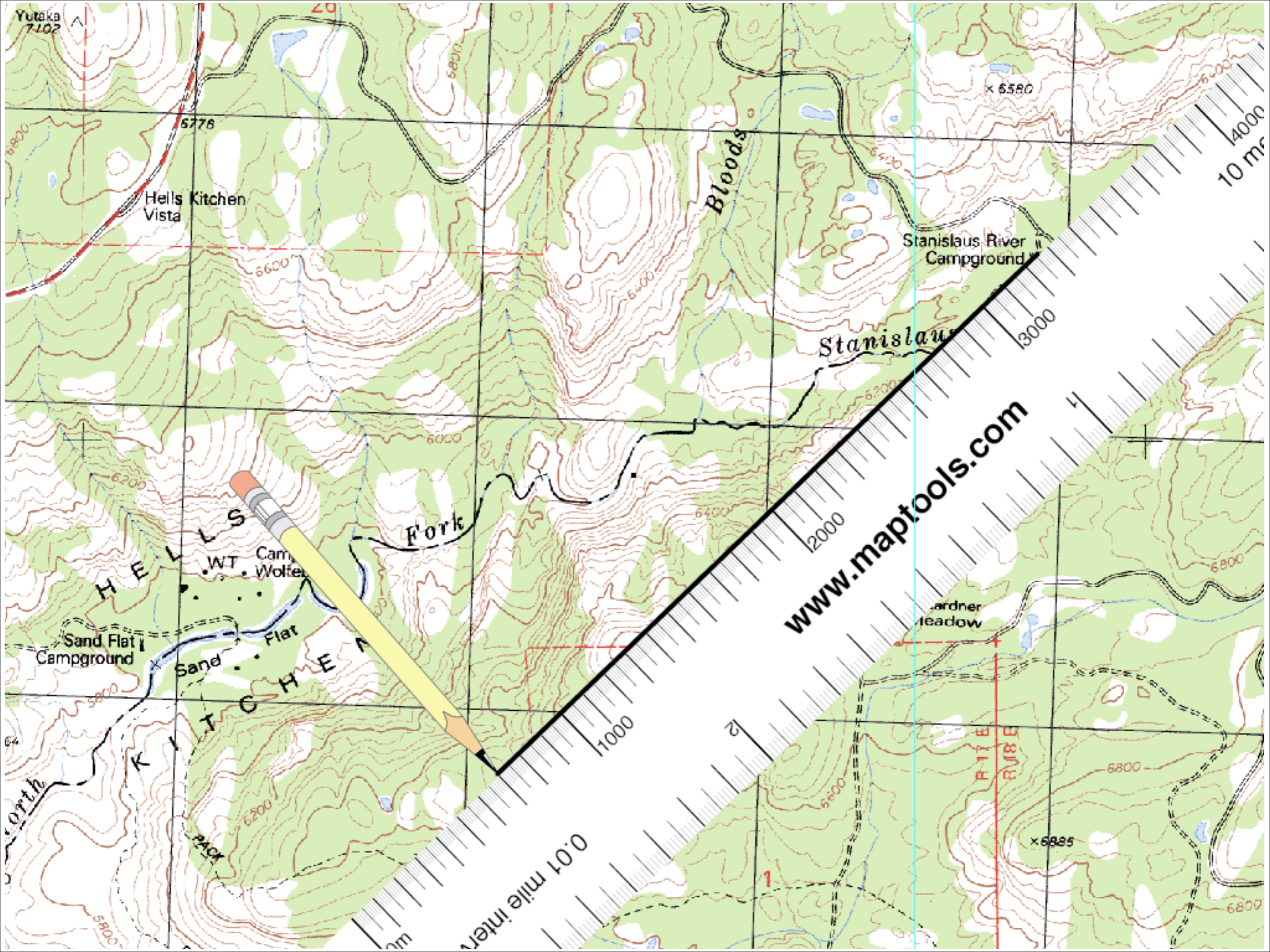
TRAIL

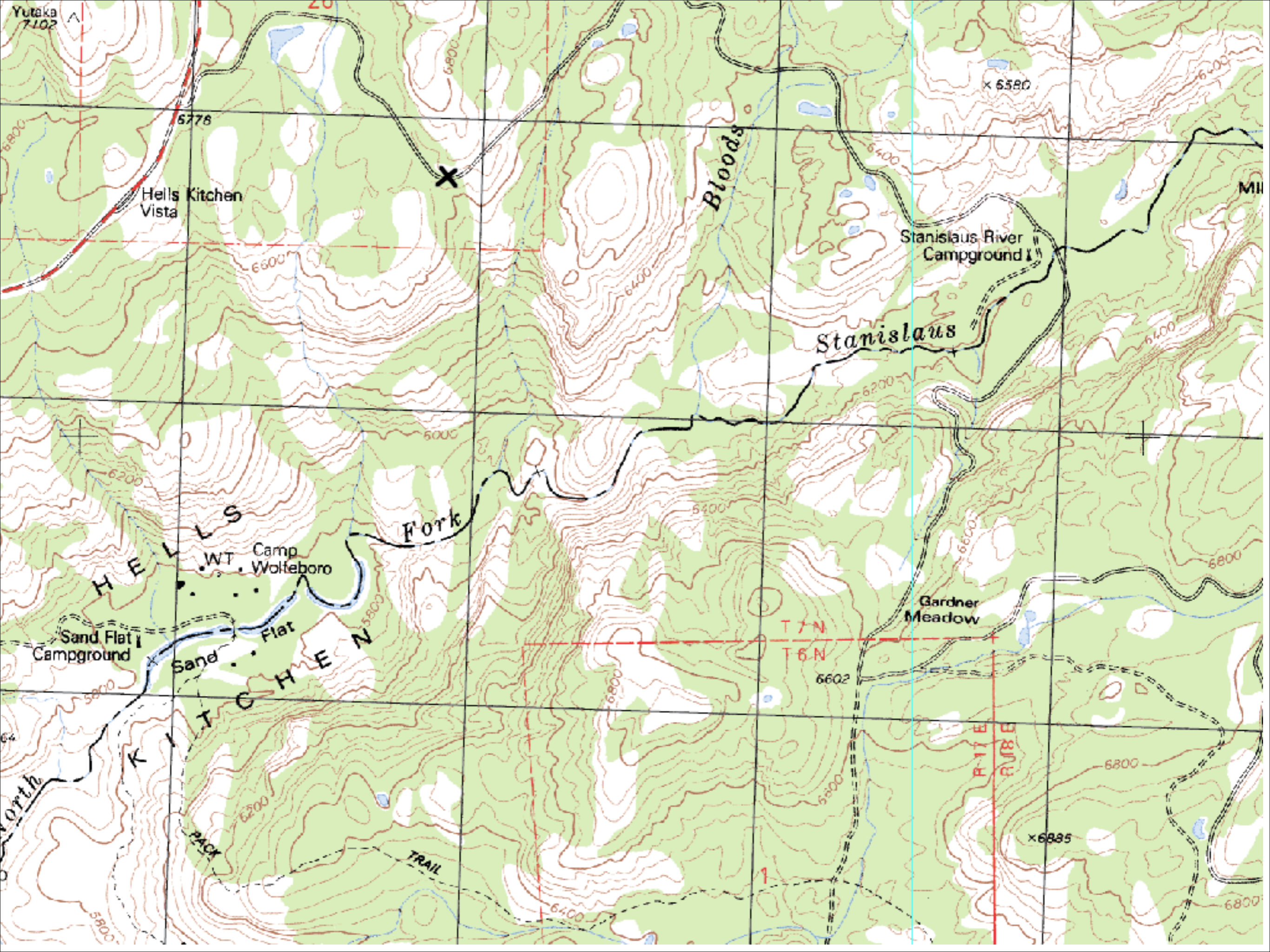
TRAIL

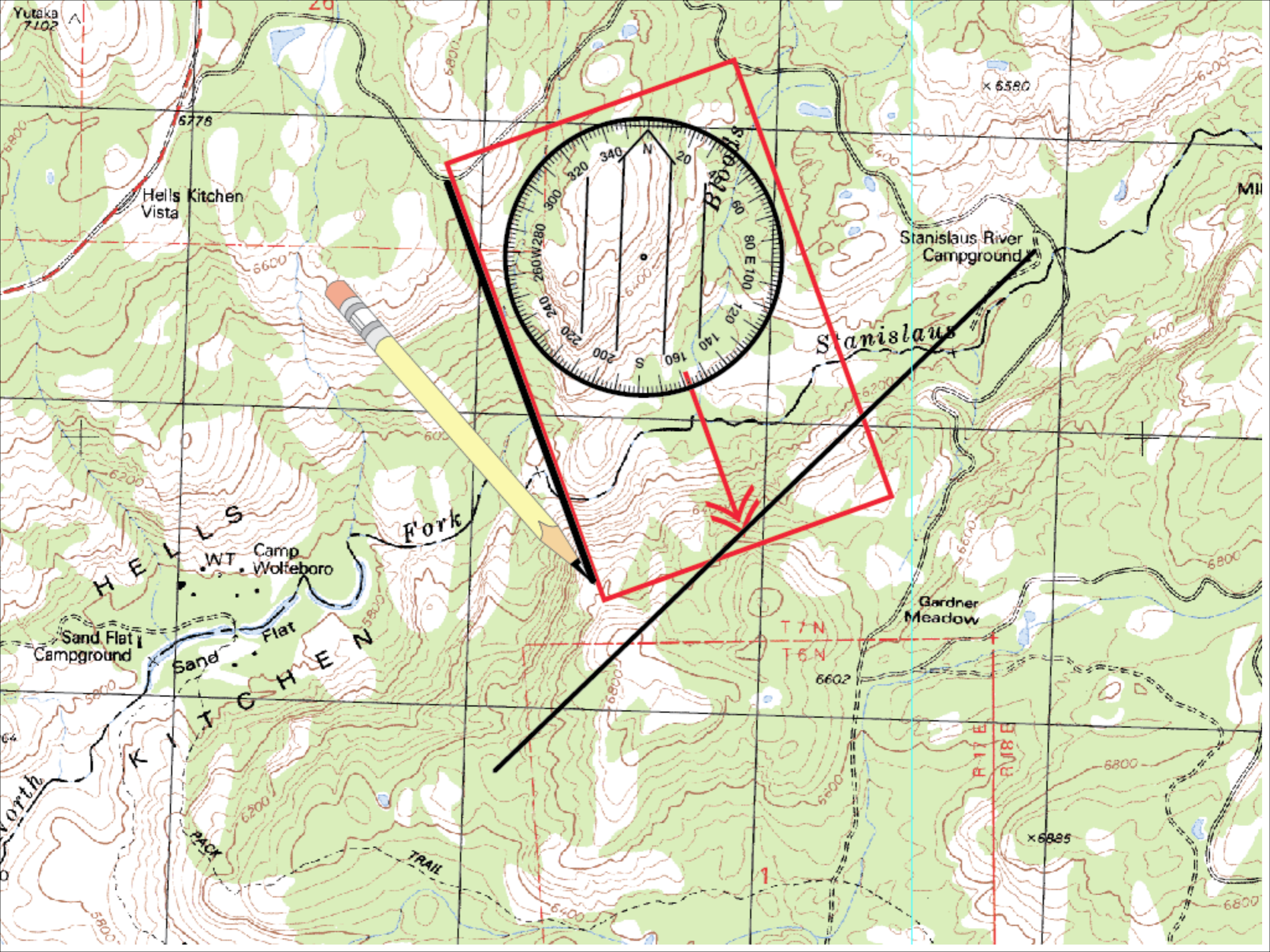
6400

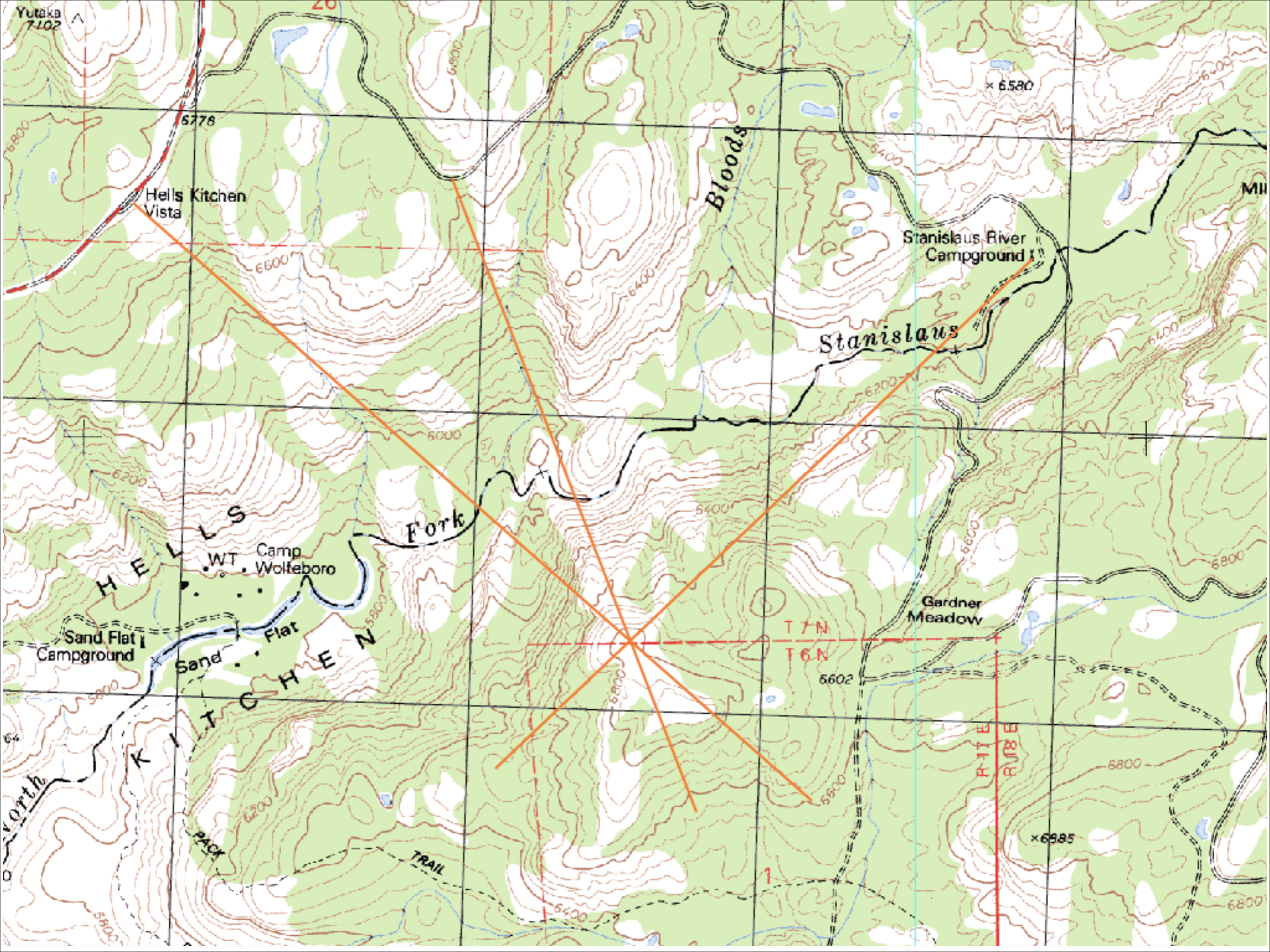
1

R1E
R18E









Yutaka
7102

6776

Hells Kitchen
Vista

6600

Bloods

x 6580

Stanislaus River
Campground

Stanislaus

Fork

WT Camp
Wolfeboro

Gardner
Meadow

Sand Flat
Campground

Sand
Flat

T 7 N

T 6 N

6602

R 17 E

R 18 E

x 6585

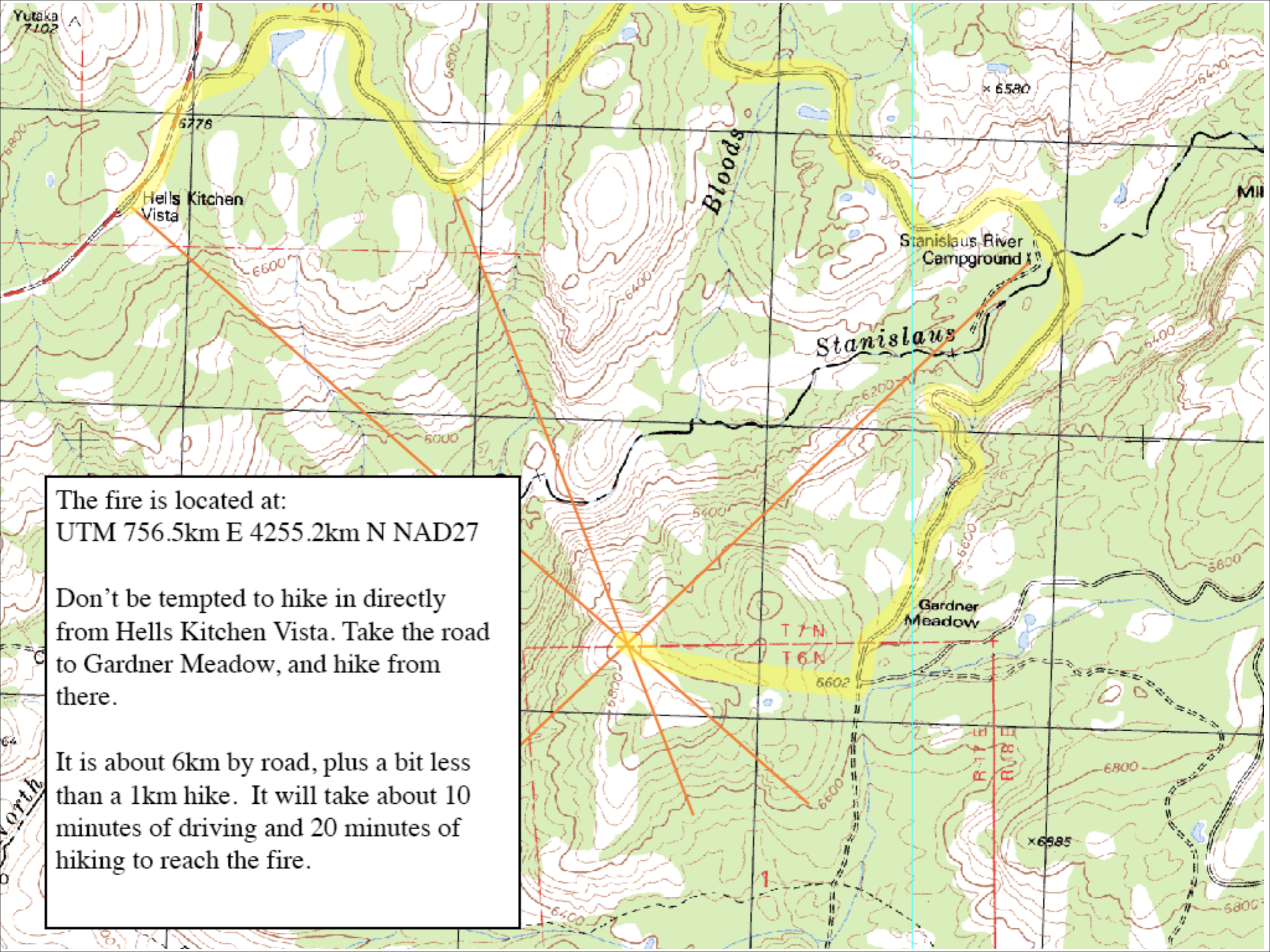
North

PACK

TRAIL

6800





The fire is located at:
UTM 756.5km E 4255.2km N NAD27

Don't be tempted to hike in directly from Hells Kitchen Vista. Take the road to Gardner Meadow, and hike from there.

It is about 6km by road, plus a bit less than a 1km hike. It will take about 10 minutes of driving and 20 minutes of hiking to reach the fire.